

2015



= Free composting workshop offered.
Phone (925) 779-6137 to enroll
and for hours and location.



Recycling Collection Schedule



2015

January							February							March							April						
sun	mon	tues	wed	thur	fri	sat	sun	mon	tues	wed	thur	fri	sat	sun	mon	tues	wed	thur	fri	sat	sun	mon	tues	wed	thur	fri	sat
					1	2	1	2	3	4	5	6	7	1	2	3	4	5	6	7				1	2	3	4
4	5	6	7	8	9	10	8	9	10	11	12	13	14	8	9	10	11	12	13	14	5	6	7	8	9	10	11
11	12	13	14	15	16	17	15	16	17	18	19	20	21	15	16	17	18	19	20	21	12	13	14	15	16	17	18
18	19	20	21	22	23	24	22	23	24	25	26	27	28	22	23	24	25	26	27	28	19	20	21	22	23	24	25
25	26	27	28	29	30	31								29	30	31					26	27	28	29	30		

May							June							July							August						
sun	mon	tues	wed	thur	fri	sat	sun	mon	tues	wed	thur	fri	sat	sun	mon	tues	wed	thur	fri	sat	sun	mon	tues	wed	thur	fri	sat
					1	2	1	2	3	4	5	6	1	2	3	4										1	
3	4	5	6	7	8	9	7	8	9	10	11	12	13	5	6	7	8	9	10	11	2	3	4	5	6	7	8
10	11	12	13	14	15	16	14	15	16	17	18	19	20	12	13	14	15	16	17	18	9	10	11	12	13	14	15
17	18	19	20	21	22	23	21	22	23	24	25	26	27	19	20	21	22	23	24	25	16	17	18	19	20	21	22
24	25	26	27	28	29	30	28	29	30					26	27	28	29	30	31	23	24	25	26	27	28	29	

September							October							November							December						
sun	mon	tues	wed	thur	fri	sat	sun	mon	tues	wed	thur	fri	sat	sun	mon	tues	wed	thur	fri	sat	sun	mon	tues	wed	thur	fri	sat
		1	2	3	4	5					1	2	3	1	2	3	4	5	6	7				1	2	3	4
6	7	8	9	10	11	12	4	5	6	7	8	9	10	8	9	10	11	12	13	14	6	7	8	9	10	11	12
13	14	15	16	17	18	19	11	12	13	14	15	16	17	15	16	17	18	19	20	21	13	14	15	16	17	18	19
20	21	22	23	24	25	26	18	19	20	21	22	23	24	22	23	24	25	26	27	28	20	21	22	23	24	25	26
27	28	29	30				25	26	27	28	29	30	31	29	30						27	28	29	30	31		

2016

January							February							Legend		
sun	mon	tues	wed	thur	fri	sat	sun	mon	tues	wed	thur	fri	sat			
					1	2	1	2	3	4	5	6	Recycling Collections		Yard Waste Collections	
3	4	5	6	7	8	9	7	8	9	10	11	12	13	Recycling symbols indicate recycling collections. Pickups are on the same day as garbage service.	Dates with green boxes indicate yard waste collection week. Pickups are biweekly on the same day as garbage service.	
10	11	12	13	14	15	16	14	15	16	17	18	19	20			
17	18	19	20	21	22	23	21	22	23	24	25	26	27			
24	25	26	27	28	29	30	28	29								

A = Green Event in Antioch April 18: Keep Antioch Beautiful • May 3: Bringing Back the Natives Garden Tour • May 8: Reuse Art Class: Flowers for Mom • May 14: Bike to Work • Sept. 18-19: Coastal Cleanup • Oct. 2-4: Citywide Yard Sale • Oct. 10: Reuse Roundup • Oct. 14: Costume Exchange



BROWN CART

Weekly Recycling Service

OK FOR RECYCLING

PAPER

- Books (paperback, hardcover)
- Boxes, packages
- Carbonless paper
- Cardboard (cut to fit in cart)
- Catalogs
- Cereal boxes
- Colored and construction paper
- Computer paper
- Copy paper
- Coupons
- Detergent boxes
- Egg cartons (paper only; no Styrofoam)
- Envelopes (metal clasps, plastic windows OK)
- Frozen food packages (remove liners)
- Gift wrap (nonmetallic)
- Junk mail
- Magazines
- Manila folders
- Newspapers and inserts
- Office paper



- Paper (adhesive/ Post-its)
- Paper bags
- Paper packaging with remnant tape
- Paper towel and toilet paper tubes
- Pizza boxes (no food residue)
- Telephone books
- Tissue paper (gift type)

METAL

- Aerosol cans (empty)
- Aluminum cans
- Aluminum foil (clean)



Place carts at curb by 6 a.m., and keep carts 3 feet apart.

- Aluminum pie plates
- Cookie sheets
- Beverage cans
- Food cans (clean)
- Paint cans (empty, dried, latex)
- Pet food cans
- Pots and pans
- Scrap metal
- Small metal items
- Steel cans
- Tin cans

PLASTIC

- (Containers; empty; with chasing arrows #1-#7; hard plastics)
- Baby wipe containers
- Bleach bottles
- Buckets without handles
- Beverage containers (soda, water, juice)
- Detergent bottles
- Food containers
- Fruit basket (plastic, #1-#7)
- Household cleaning containers
- Milk jugs
- Plant containers (plastic, #1-#7)
- Prescription bottles (empty, #1-#7)



- Salad dressing bottles
- Shampoo, conditioner, toiletry bottles
- Toys
- Tub containers (yogurt, cottage cheese, margarine, #1-#7)
- Water jugs

ELECTRONICS

- (Computer peripherals only; additional items can be recycled — see Toxics page)
- Keyboards
- Mouse
- Speakers

NOT FOR BROWN CART

- ❌ Appliances
- ❌ Batteries
- ❌ Ceramics
- ❌ Food waste
- ❌ Food packaging
- ❌ Garbage
- ❌ Hangers (metal or plastic)
- ❌ Hazardous waste
- ❌ Ink cartridges
- ❌ Milk cartons
- ❌ Mirrors, windows
- ❌ Plastic-coated paper
- ❌ Plastic bags
- ❌ Plastic wrap, packaging
- ❌ Restroom waste
- ❌ Sharps (needles, syringes, lancets)
- ❌ Styrofoam
- ❌ Waxed paper
- ❌ Yard waste

GLASS

- (Empty; all colors; lids, caps OK)
- Bottles
- Beverage containers
- Jars



REMINDERS

- Collections are WEEKLY on the same day as your garbage service.
- For missed service, please call within 24 hours.
- Place all recyclables in the brown recycling cart.
- Be sure all materials fit inside the cart with lid closed.
- Extra cardboard can be recycled three times a year at no additional charge with on-call recycling service. See on-call recycling on Green Cart page.
- Before discarding, consider reusing or donating.
- For recycling and reuse options for other materials call the Recycling Hotline at 1-800-750-4096 or visit www.cccrecycle.org.



GREEN CART

Biweekly Yard Waste Service

Place carts at curb by 6 a.m., and keep carts 3 feet apart.

OK FOR RECYCLING

- | | | |
|---|------------------|------------|
| Branches and tree twigs 3 inches or less in diameter and 3 feet or less in length | Flowers | Prunings |
| Brush | Garden trimmings | Shrubbery |
| Cactus | Grass | Straw |
| Flower cuttings | Hay | Weeds |
| | House plants | Wood chips |
| | Lawn clippings | Yard waste |
| | Leaves | |

ON-CALL YW & RECYCLING CLEANUPS

Recycle extra yard waste (YW), extra corrugated cardboard or both with up to three (3) free on-call recycling cleanups per year. Household batteries and compact fluorescent lights (CFLs) can also be recycled with your on-call recycling cleanups.

To schedule a recycling cleanup, call (925) 685-4711 or request the service online at www.republicservices.com/site/pacheco-ca. Recycling cleanups are in addition to the biweekly yard waste and weekly recycling service and are scheduled for collection on the same day as your regular recycling and yard waste service. If you request a collection on a day other than your regular recycling and yard waste service day, a fee will apply.

Extra Yard Waste

- After filling yard waste cart, place extra leaves and yard clippings in cardboard boxes, paper bags or containers that are 32 gallons or less in volume. Maximum 75 lbs. per container. (No plastic bags.)
- Containers will not be taken away.
- Tree branches and prunings must be 3 feet or less in length and 3 inches or less in diameter. Bundle with string or cord.
- Place extra yard waste containers curbside by 6 a.m. of pickup day or night before.
- Keep extra material at least 4 feet away from carts.

Corrugated Cardboard

- Flatten corrugated cardboard and trim to 4 feet or less on each side. Bundle with cord or string. No maximum on bundle's thickness if less than 50 lbs.
- Place bundled cardboard curbside by 6 a.m. of your pickup day or the night before.
- Keep extra material at least 4 feet away from carts.

Household Batteries and CFLs

- Place batteries in clear, quart-size plastic bag, i.e., Ziploc. Single-use AA, AAA, C, D and 9V batteries only. No rechargeables. (Visit www.call2recycle.org for rechargeables.)
- Place compact fluorescent lights (CFLs) in a plastic bag. No broken bulbs or a fee will be charged for handling the broken CFLs. (Broken CFLs are hazardous; see Toxics page for Delta HHW Collection Facility information.)
- Place bagged batteries and CFLs **NEXT TO** recycling cart (**NOT** in carts).



FIRE DANGER!

Cell phones with batteries can be flammable. Please take cell phones to an electronics recycling facility.

NOT ACCEPTABLE MATERIALS

The following are not acceptable for regular or on-call yard waste recycling:

- ⊘ Plastic bags
- ⊘ Rocks, concrete and dirt
- ⊘ Sod and palm fronds
- ⊘ Loose fruits and vegetables
- ⊘ Tree trunks, stumps and branches more than 3 inches in diameter or more than 3 feet in length
- ⊘ Pet waste
- ⊘ Hazardous waste
- ⊘ Garbage and inorganic materials including recyclables like plastics, glass, metal and paper.

REMINDERS

- Collection is **BIWEEKLY** on the same day as garbage service.
- For missed service, please call within 24 hours.
- Be sure all materials fit inside the cart with lid closed.
- Keep cart 3 feet away from other carts and any objects including cars and mailboxes.
- To learn how to compost yard and food waste at home, come to a free workshop (See dates on collection schedule calendar.)



BLUE CART

Weekly Garbage Service

Place carts at curb by 6 a.m., and keep carts 3 feet apart.

WHAT SHOULD GO IN YOUR GARBAGE CART

Once you have placed all yard clippings in your green cart and recyclables in your brown cart, place the remaining discards in your blue garbage cart following the guidelines on this page. If you have any questions, call us at (925) 685-4711.



REMINDERS

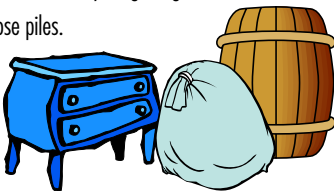
- Don't place recyclables, yard waste or hazardous wastes in garbage carts.
- Be sure all materials fit inside the cart with lid closed.
- Place cart at curb the night before or by 6 a.m. of your collection day.
- For missed service, please call within 24 hours.
- Leave at least three (3) feet of space between garbage cart and any other object, including yard waste and recycling carts and any obstacles such as mailboxes, cars or portable basketball hoops.
- Before discarding items, consider reusing or donating.

Help Keep Antioch Clean by Using your 2 FREE On-Call Cleanups

Antioch residents may schedule two free cleanups per year at any time. Use cleanups to discard up to two cubic yards (approx. fourteen 32-gallon bags) of extra trash and items too large for garbage carts. To schedule a cleanup, visit www.republicservices.com/site/pacheco-ca and request the service online or call (925) 685-4711. Additional bags can be picked up for \$2.50 per bag. Additional pickups can be scheduled for a fee.

Guidelines for Cleanups

- Place items at the curb before 6 a.m., preferably the night before your cleanup day.
- All items must be stacked in one place.
- Bag or tie items with rope, cord or string strong enough to keep bundles intact or place in containers, including metal and plastic trash cans. All containers will be taken away unless indicated otherwise with a note on the container.
- Place cleanup items in a single pile at a distance of 5 feet or more from your garbage cart.
- No loose piles.



Unacceptable Materials

- No single item may weigh more than 50 lbs. or be longer than 4 feet. Bags cannot weigh more than 50 lbs.
- No large car parts (transmission blocks, engines, etc.)
- No rocks, dirt or concrete, and no tree stumps or large tree trunks.
- No hazardous waste including paint, oil filters, motor oil, antifreeze, car batteries, solvents, pesticides, cleaners, fluorescent bulbs. Hazardous waste must be taken to the Delta HHW Collection Facility.

OK for Bulky Item Pickup, Not Cleanup

- Tires, furniture, mattresses, refrigerators, freezers, air conditioners, stoves, appliances, television sets and electronics such as DVD players, fax machines, printers. See Bulky Item page for details.

OK for Recycling, Not Cleanup

- Keyboards, computer mice, speakers. See Brown Cart page.
- Household batteries and CFLs. See on-call recycling on Green Cart page.

BULKY ITEMS

Free Pickup: Two Items

Antioch residents may call to have any two of the items below picked up at no charge annually. Just call the office at (925) 685-4711 to schedule.

APPLIANCES

- Air conditioner (pickup & Freon removal)
- Dishwasher
- Dryer
- Freezer (pickup & Freon removal)
- Hot water heater
- Refrigerator (pickup & Freon removal)
- Stove
- Washer
- Swamp cooler



ELECTRONICS

- Computer monitors
- Electronics
- TV (32 inches or smaller)
- TV (32 inches or larger)



FURNITURE

- Couch/sofa
- Hide-a-bed
- Double mattress
- Double box spring
- Twin mattress
- Twin box spring
- Queen mattress
- Queen box spring
- King mattress
- King box spring



TIRES

- Tires (less than 19 inches)
- Tires with rim (less than 19 inches)
- Tires (larger than 19 inches)
- Tires with rim (larger than 19 inches)

If you need more items picked up within a year, items after the second FREE bulky item can be collected for a fee.

SERVICES

Just Give Us a Call

Whoops! Too much trash. My lid should close.



Low-income Senior Discount

A low-income senior discount is available for Antioch residents who are the sole user (except for legal dependents) of the utilities and have a total annual household income of \$32,350 or less, are 62 years of age or older, or disabled as defined by the Social Security Disability Program. Call Customer Service at (925) 685-4711 for more information.

Going on Vacation?

Please schedule vacation holds in advance:

- Minimum 2 weeks per hold
- Maximum 4 holds per year

Call Customer Service at (925) 685-4711 for additional information.

Holiday Treecycling

Republic Services will notify you in your November solid waste bill of the holiday tree recycling program. No flocked trees will be taken.



How to Reach Us; New Online Service

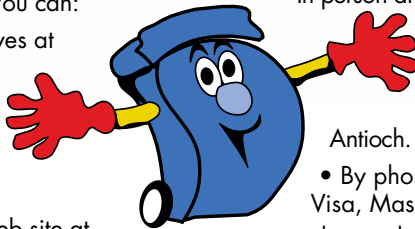
Questions about your service or bill can be answered by Customer Service. You can:

- Call one of our representatives at (925) 685-4711;
- Write us at 441 North Buchanan Circle, Pacheco, CA 94553, attn: Customer Service Manager;
- Visit the Republic Services web site at www.republicservices.com/site/pacheco-ca where you can order a cart repair, schedule a cleanup, report a missed collection and request other services online.

Payment Options

Customers have four convenient ways to pay their garbage bills:

- Online. Make one-time payments or sign up for auto bill-pay with credit card or bank account at <http://awbillpay.inetbiller.com>. You may also call Customer Service at (925) 685-4711 to set up your auto bill-pay account;
- By mail, using the envelope provided with your bill;
- In person at Republic Services' office at 441 N. Buchanan Circle, Pacheco, or by check or money order only at the UPS Store, 2974 Delta Fair Blvd., Antioch. You must have payment stub;
- By phone with American Express, Visa, MasterCard or Discover. We do not accept checks over the phone.



Cart Sizes

Carts are available in the following sizes:

- Garbage: 20, 32, 64, 96 gallons
- Recycling: 64 gallons, 96 gallons available upon request
- Yard Waste: 96 gallons
- Cart dimensions:

Goodbye. I have to stay home.

Missed Collection?

Please call within 24 hours to report that your garbage, recycling or yard waste cart has not been serviced.

Moving?

If you are moving, please leave your recycling, yard waste and garbage carts in a secure location for the next resident. Please call us to discontinue service.



Size	Height	Width	Depth	Footprint
20 gal.	32.6"	19.8"	18.0"	<2.0 sq. ft.
32 gal.	38.5"	19.0"	22.0"	2.0 sq. ft.
64 gal.	42.0"	25.5"	27.0"	2.5 sq. ft.
96 gal.	46.5"	26.5"	33.5"	3.0 sq. ft.

The ECO-PAGE



Helping You Help the Earth!

REDUCE

Reducing the amount of waste generated is the best waste management option for protecting the environment.

Styrofoam

Since there is almost no market for Styrofoam, it goes to the landfill. Do the following to cut your use of Styrofoam:



- Bring your own travel mug when getting a cup of coffee at the coffee shop or at the office.
- Buy eggs in cartons made from cardboard or molded fiber.
- Ask your favorite restaurant to switch to greener packaging for take-out or bring your own container.

Lose your lawn; grow a garden

You can reduce your yard waste by replacing your lawn with a water-efficient garden. Homeowners can get rebates of up to \$1,000 through the Contra Costa Water District's Water Efficient Landscape Rebate Program. Visit <http://www.ccwater.com/conserve> for more information on this program and others.

REUSE

Reusing items, or making sure they get to people or groups that reuse them, consumes less energy and resources than recycling or disposal.

Freecycle, CalMax, and Craigslist

The free, fantastic services at CalMAX.org, Craigslist.org, and Freecycle.org help you find new homes for unwanted goods, and they are sources of free (or cheap) goods.

Choose to Reuse: Garage Sales & Donations

Make and save money with garage sales. Sell items you don't want or need for cash and avoid disposal costs. The City of Antioch and Republic Services will sponsor a 6th annual Citywide Garage Sale October 2-4, 2015.

The following week, Republic Services will sponsor a 6th annual Reuse Roundup on Saturday, October 10, 2015. Items that are dropped off will be given to local causes and charities in Antioch.

SAVE THIS WEEKEND!

SAVE THIS DATE!

Delta HHW Collection Facility's Reuse Area

Need some paint? Gardening products? Cleaning Chemicals? Stop by the Reuse Area at the Delta HHW Collection Facility to drop off unwanted chemicals and pick up new ones, all at no charge! The facility is open Thursdays through Saturdays, 9 a.m. to 4 p.m.

RECYCLE

Recycling not only saves landfill space, it also consumes less energy and resources than making new items with virgin or raw material.

Recycle where you play!

All 30 of Antioch's parks now have blue recycling bins for you to recycle your bottles and cans. Food waste, Styrofoam, and plastic bags are not acceptable waste for these recycling bins.

Plastic Bags

We do not accept plastic bags for recycling, but state law requires grocers to accept them for recycling. For more information, visit www.plasticbagrecycling.org.

PROPER DISPOSAL

Many common items contain mercury, heavy metals and other toxic chemicals and should be disposed of properly. See the Toxics page for details on proper disposal of used oils, electronics, and household hazardous wastes.

Bulky Items

Avoid using unlicensed haulers to pick up your large, bulky items. Antioch residents may call (925) 685-4711 to schedule a bulky item pickup with Republic Services. See the Bulky Item page for a list of acceptable pickup items.

Illegal Dumping

Illegal dumping in Antioch can be reported to Republic Services by calling the customer service line at (925) 685-4711.

For more information about how to prevent illegal dumping in Contra Costa County, please call 1-800-NO-DUMPING (1-800-663-8674).

Eco-tips and Alerts

To get more eco-tips and learn about upcoming events, "like" Eco-Antioch on Facebook or call the Environmental Resource Line, (925) 779-6137.

TOXICS

Household Hazardous Waste



Oil Filters, Motor Oil and Cooking Oil

Recycle oil filters and used motor oil curbside.

Recycle large amounts of cooking oil at the Delta HHW Collection Facility.

Oil Filters, Motor Oil

- Pour motor oil into a clear plastic container like a milk jug.
- Tape lid to close it securely.
- Place beside your recycling cart.
- Maximum 3 gallons of oil per pickup.
- Place oil filters in sealable plastic bag, i.e., Ziploc bag, seal.
- Place beside your recycling cart.

Cooking Oil

- Pour cooking oil into a clear container like a plastic milk jug or glass jar.
- Tape lid to close it securely.
- Recycle at the Delta HHW Collection Facility.



Household Hazardous Wastes

It is illegal to throw hazardous waste in your garbage or recycling cart. Recycle your car and household batteries, latex paint, antifreeze, motor oil, oil filters, fluorescent bulbs, mercury thermometers, pesticides, solvents and other household chemicals **FREE OF CHARGE** at the Delta HHW Collection Facility, 2550 Pittsburg-Antioch Highway, Antioch. Call (925) 756-1990 for hours and information, or visit www.ddsd.org.

Sharps


It is illegal to throw syringes, needles and lancets in your garbage or recycling cart. Call the Delta HHW Collection Facility at (925) 756-1990 to have a free sharps container mailed to you. Once full, the container can be dropped off at the facility. For other drop-off sites visit www.republicservices.com/site/pacheco-ca.



Your Options for TVs, Monitors, Electronics

State law bans CRTs (television and computer monitors) and other electronics from being placed in the garbage.

Republic Services offers ways to handle these items:

- Keyboards, mice, speakers and other computer peripherals can be placed in your brown recycling cart. 
- Televisions, computer monitors and other electronics can be left out as an item in the bulky item service. 
- Household batteries and CFLs (compact fluorescent lights) can be included in an on-call recycling pickup. 

You can take e-waste to the Delta HHW Collection Facility, free of charge. Call (925) 756-1990 for hours and information, or visit www.ddsd.org.

Local e-waste firms offer free curbside pickup of e-waste. For a list, visit www.republicservices.com/site/pacheco-ca or call us at (925) 685-4711.

Old Pills Piling Up?

Do not dump medicines and over-the-counter drugs down the drain or toilet.

Flushed drugs enter local waterways and can harm humans, animals and the environment. Wastewater facilities cannot remove these chemicals.

Dispose of non-narcotic medicines safely at Delta HHW Collection Facility, 2550 Pittsburg-Antioch Highway, Antioch. Phone: (925) 756-1990. Visit the website at www.ddsd.org. All medicines are accepted at Antioch Police Dept., 300 L St., 9 a.m. - 1 p.m. Mon.-Thur.



FIRE DANGER!

Cell phones with batteries can be flammable. Please take cell phones to an electronics recycling facility.





441 N. Buchanan Circle
Pacheco, CA 94553

(925) 685-4711

www.republicservices.com/site/pacheco-ca



Place carts at curb by 6 a.m. with 3 feet of space around each cart.



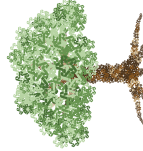
Printed on Recycled Paper
Content Is 30% Post-Consumer Waste



Printed with Soy Ink

Keep Antioch Beautiful!
Report Illegal Dumping by
Calling 1-800-663-8674.

Presorted
First-Class
U.S. Postage Paid
PLEASANT HILL, CA
PERMIT NO. 122



Naturally Sustainable

Republic Services is a green business and helps customers pursue "naturally sustainable" practices.

2015 CUSTOMER GUIDE

Garbage, Recycling, Yard Waste Services



Antioch



Naturally Sustainable