

Animal Planter Craft



We'll handle it from here.®

Instructions

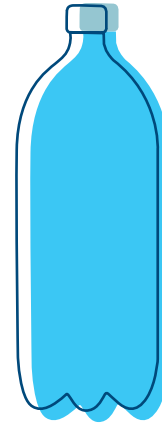
What you'll need:

- 2-liter soda bottle
- Acrylic paints & paintbrushes
- Scissors
- Permanent marker(s)
- Planting supplies – soil, plant or seeds

Steps:

- 1) Print template and cut out the set of ears you'd like to use.
- 2) Trace the template onto the bottle with the permanent marker.
- 3) Cut the bottle where you've drawn the lines for the ears.
- 4) Paint the outside of the bottle.
- 5) Use pens or paint to draw a face on the dog or cat.
- 6) Collect soil to put inside the planter. Place a seed or plant in the soil.

Supplies



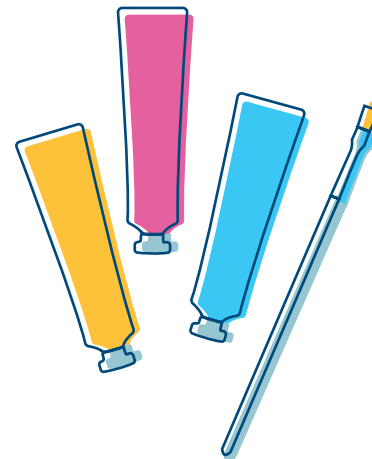
2-liter plastic bottle



Scissors



Plant/seeds & soil



Paints & Paintbrushes



Permanent Markers

Animal Planter Craft



We'll handle it from here.

Templates

