

Recycling

Empty. Clean. Dry.

- ✓ Do not bag recyclables
- ✓ No plastic grocery bags
To find a drop-off location, visit [PlasticFilmRecycling.org](https://www.PlasticFilmRecycling.org)
- ✓ Extra recyclables may be set out in boxes, paper bags or 32-gallon cans marked "Recycle" next to recycling cart



Paper



Cardboard (flatten)
Max of 3 ft. x 3 ft.



Metal Containers



Glass Bottles & Jars



Plastic Cups, Tubs, Bottles & Jugs



NO RESIDUAL FOOD OR LIQUID



NO SHREDDED PAPER



NO PLASTIC BAGS



[RepublicServices.com/municipality/Lake-Forest-Park-WA](https://www.RepublicServices.com/municipality/Lake-Forest-Park-WA)

206.682.9730

Trash

Please bag all trash.

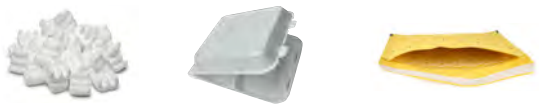
- ✓ No hazardous waste
- ✓ No hot ashes or coals
- ✓ Bag all trash
- ✓ Extras may be collected in securely tied plastic bags and clearly labeled as "trash". Fees apply.



Packaging



Polystyrene Foam



Diapers & Pet Waste



Household Items



Small Items



[RepublicServices.com/municipality/Lake-Forest-Park-WA](https://www.RepublicServices.com/municipality/Lake-Forest-Park-WA)

206.682.9730

2023-2024

Recycling Collection Calendar

Trash and compost are collected weekly.
Recycling is collected every other week.

Observed holidays: Thanksgiving Day, Christmas Day, New Year's Day

- Holiday – no service. If your collection day falls on or after the holiday that week, service will move ahead one day (example: Thursday service will move to Friday and Friday service will move to Saturday).

■ Recycling Collection

R1

JULY 2023						
S	M	T	W	T	F	S
						1
2	3	4	5	6	7	8
9	10	11	12	13	14	15
16	17	18	19	20	21	22
23	24	25	26	27	28	29
30	31					

AUGUST 2023						
S	M	T	W	T	F	S
		1	2	3	4	5
6	7	8	9	10	11	12
13	14	15	16	17	18	19
20	21	22	23	24	25	26
27	28	29	30	31		

SEPTEMBER 2023						
S	M	T	W	T	F	S
						1
2	3	4	5	6	7	8
9	10	11	12	13	14	15
16	17	18	19	20	21	22
23	24	25	26	27	28	29
30						

OCTOBER 2023						
S	M	T	W	T	F	S
1	2	3	4	5	6	7
8	9	10	11	12	13	14
15	16	17	18	19	20	21
22	23	24	25	26	27	28
29	30	31				

NOVEMBER 2023						
S	M	T	W	T	F	S
			1	2	3	4
5	6	7	8	9	10	11
12	13	14	15	16	17	18
19	20	21	22	23	24	25
26	27	28	29	30		

DECEMBER 2023						
S	M	T	W	T	F	S
						1
2	3	4	5	6	7	8
9	10	11	12	13	14	15
16	17	18	19	20	21	22
23	24	25	26	27	28	29
30	31					

JANUARY 2024						
S	M	T	W	T	F	S
	1	2	3	4	5	6
7	8	9	10	11	12	13
14	15	16	17	18	19	20
21	22	23	24	25	26	27
28	29	30	31			

FEBRUARY 2024						
S	M	T	W	T	F	S
				1	2	3
4	5	6	7	8	9	10
11	12	13	14	15	16	17
18	19	20	21	22	23	24
25	26	27	28	29		

MARCH 2024						
S	M	T	W	T	F	S
						1
2	3	4	5	6	7	8
9	10	11	12	13	14	15
16	17	18	19	20	21	22
23	24	25	26	27	28	29
30	31					

APRIL 2024						
S	M	T	W	T	F	S
	1	2	3	4	5	6
7	8	9	10	11	12	13
14	15	16	17	18	19	20
21	22	23	24	25	26	27
28	29	30				

MAY 2024						
S	M	T	W	T	F	S
		1	2	3	4	
5	6	7	8	9	10	11
12	13	14	15	16	17	18
19	20	21	22	23	24	25
26	27	28	29	30	31	

JUNE 2024						
S	M	T	W	T	F	S
						1
2	3	4	5	6	7	8
9	10	11	12	13	14	15
16	17	18	19	20	21	22
23	24	25	26	27	28	29
30	31					

©2023 Republic Services, Inc.

[RepublicServices.com/municipality/Lake-Forest-Park-WA](https://www.RepublicServices.com/municipality/Lake-Forest-Park-WA)

206.682.9730

Composting

Compost yard waste, food scraps and food-soiled paper. No plastic.

- ✓ No plastic bags
- ✓ No rocks, dirt or bark
- ✓ Cedar Grove-approved compostable bags are OK
- ✓ Extra yard waste may be collected in paper bags, 32-gallon cans or boxes 3ft. x 3ft. x 3ft. max. Clearly label as "yard waste." Fees apply.



Plants & Yard Waste



Fruits & Vegetables



Meat, Bones & Leftovers



Dairy, Eggs, Bread & Coffee Grounds



Food-Soiled Paper



NO PLASTIC BAGS



NO SHREDDED PAPER



[RepublicServices.com/municipality/Lake-Forest-Park-WA](https://www.RepublicServices.com/municipality/Lake-Forest-Park-WA)

206.682.9730

[RepublicServices.com/municipality/Lake-Forest-Park-WA](https://www.RepublicServices.com/municipality/Lake-Forest-Park-WA)

206.682.9730

Hazardous Waste

Take hazardous materials to a hazardous waste drop-off site.

Hazardous products do not go in the household trash. Safely dispose of them at a King County Hazardous Waste drop-off site.

HazWasteHelp.org | 206.296.4692

Household Cleaners



Lawn & Garden



Fuel



Automotive Products



Tubes/Bulbs



Find additional collection sites at LightRecycle.org.

Pharmaceuticals and syringes cannot be dropped off at the Factoria Household Hazardous Waste site. See drop-off information below.

Pharmaceuticals



For drop-off locations, please visit MedTakeBackWashington.org

Medical Sharps



For drop-off locations, please visit KingCounty.gov/whatdoidowith

RepublicServices.com/municipality/Lake-Forest-Park-WA

206.682.9730

Additional Guidelines

Expanded Curbside Recycling

Call **206.682.9730** to schedule a pickup.
Limited to single-family households.

Fluorescent Tubes and Bulbs – wrap tubes in newspaper and tape (max 4 ft.) Place bulbs in a clear, sealed plastic bag. Limit 2 per collection/10 per year.

Used Cooking Oil – put in clear, screw-top plastic gallon jugs. Label with name and address. Limit 3 gallons per collection/10 gallons per year.

Household Batteries Are a Fire Hazard – place button and alkaline batteries in a sealed, clear, plastic bag. Place rechargeable and non-rechargeable batteries in separate bags.

Call 206.682.9730 to schedule a pickup (fees apply)

Appliances (limit of 3), rigid plastics (lawn chairs, laundry baskets, buckets, etc.) and clean scrap metal.

Electronic Drop-Off Locations – EcycleWA.org

Bad Weather Conditions



If weather conditions prevent safe collection, please remove your carts after 6 p.m. Up to double the material will be collected on your next regular collection day at no additional charge. Check for alerts on the website:

RepublicServices.com/municipality/Lake-Forest-Park-WA

Cart Placement

- Please place carts at the curb by 7 a.m. (DO NOT block sidewalks).
- Place 2 feet apart with the lids opening toward the street.
- Keep at least 3 feet from cars, trees or mailboxes (our truck arms need clear overhead access to empty carts).
- Please remove carts as soon as possible on your collection day.



RepublicServices.com/municipality/Lake-Forest-Park-WA

206.682.9730

City of Lake Forest

Residential Recycling, Composting & Trash Guide



Simple account access. Anytime. Anywhere.

Manage your account from home or on the go with the Republic Services app. Visit RepublicServices.com/Account to access your account or download the app, so you can:

- ✓ Pay your bill
- ✓ Schedule a pickup
- ✓ Report a missed pickup
- ✓ Rate your service
- ✓ Repair a cart
- ✓ Find new products



RepublicServices.com/municipality/Lake-Forest-Park-WA | 206.682.9730



Sustainability in Action



1600 127th Ave NE
Bellevue, WA 98005
Phone: 206.682.9730
Hours: Monday – Friday, 7 a.m. – 7 p.m.
Saturday, 8 a.m. – 12 p.m.

RepublicServices.com/municipality/Lake-Forest-Park-WA
Printed on recycled paper

City of Lake Forest Residential Recycling,
Composting and Trash Guide