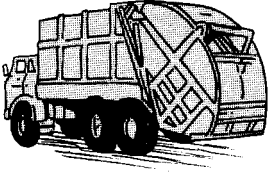




Recycling Resources



Rossman Sanitary Service, Inc (503) 636-3011

- Collection of recycling for all commercial and residential customers. It's included with your garbage service.
- Outdoor containers for recycling.
- Waste evaluations and recycling information.



Waste Reduction & Recycling Office 503-557- 6363

www.co.clackamas.or.us/dtd/garwasteinfo@co.clackamas.or.us

- Information on waste prevention, recycling and purchasing recycled products.
- Signs for your recycling containers and free office paper recycling boxes.
- Waste evaluations and help with hard-to-recycle materials.
- Presentations at employee meetings and community events.

What is your role as the customer?

- Prepare your recyclables correctly and place them in the appropriate recycling container.
- Call your solid waste and recycling company with questions about collection schedules, location of containers and other services listed above.
- Contact Clackamas County Waste Reduction with questions about recycling, waste reduction, and other services listed above.
- Follow Fire Safety guidelines. Go to www.co.clackamas.or.us/dtd/garb and click on Recycling for details or we can provide a printed copy upon request.

Waste Prevention Resources

METRO - Recycling Information Line

503-234-3000

www.metro-region.org/recycling

- Hazardous waste information and the Conditionally Exempt Generator Program.
- Publications and information on recycling, waste prevention and buying recycled products.
- **Online Buyers' Guide to Recycled Products**
www.metro-region.org/buyersguide
- **Online Construction Industry Recycling Toolkit**
www.metro-region.org/toolkit
- **Online Food Donation Resource Guide**
www.metro-region.org/food

Supply Our Schools

www.supplyourschools.com

Web site where businesses can list unneeded items to donate to schools and where schools can list the materials they need.

Materials Exchange

www.NWmaterialsmart.org

Portal for material exchange web sites that list surplus materials businesses have available and also lists materials businesses want to find.

DEQ - Commercial Waste Reduction Clearinghouse

www.deq.state.or.us/wmc/cwrc.html

Medical Waste - Contact your solid waste company.